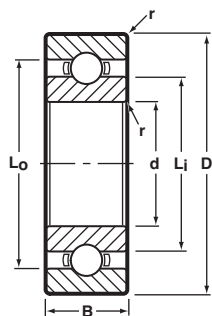




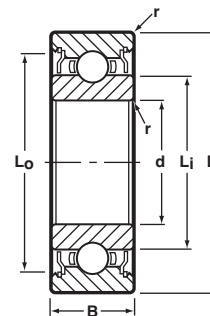
Radial, Unflanged



Open
Ribbon Cage



Shielded
Ribbon Cage



BASIC P/N	CAGE TYPE *	BORE d		O.D. D		WIDTH B		LAND DIAMETER (REFERENCE)		FILLET RADIUS r		BALL COMPLEMENT		LOAD RATINGS ** LB.	
		mm	(INCH) \diamond	mm	(INCH) \diamond	mm	(INCH) \diamond	L _j mm	L _o mm	mm	(INCH)	NO. Z	SIZE D _b	DYN. C	STATIC C ₀
☆ SSR-1900	RD/KC	10.0	.3937	22.0	.8661	6.0	.2362	14.48	19.90	.30	.012	9	1/8	580	280
☆ SSR-100	RD	10.0	.3937	26.0	1.0236	8.0	.3150	14.81	22.64	.30	.012	7	3/16	1000	440
SSR-100X	KE	10.0	.3937	26.0	1.0236	8.0	.3150	13.54	22.64	.30	.012	8	5/32	890	390
☆ SSR-200	RD	10.0	.3937	30.0	1.1811	9.0	.3543	16.66	24.98	.61	.024	7	7/32	1300	580
☆ SSR-200X	KC	10.0	.3937	30.0	1.1811	9.0	.3543	15.55	24.98	.61	.024	8	3/16	1060	510
☆ SSR-1901	R	12.0	.4724	24.0	.9449	6.0	.2362	15.98	21.29	.30	.012	9	9/64	730	350
SSR-1901X	KC/KE	12.0	.4724	24.0	.9449	6.0	.2362	15.98	21.29	.30	.012	9	1/8	635	275
☆ SSR-101	RD	12.0	.4724	28.0	1.1024	8.0	.3150	17.02	25.08	.30	.012	7	3/16	1000	460
SSR-201	RD	12.0	.4724	32.0	1.2598	10.0	.3937	18.42	25.58	.61	.024	7	15/64	1500	670
☆ SSR-1802	KC	15.0	.5906	24.0	.9449	5.0	.1969	18.08	20.89	.30	.012	14	3/32	420	260
☆ SSR-1902	RD	15.0	.5906	28.0	1.1024	7.0	.2756	18.69	25.70	.30	.012	10	5/32	940	490
☆ SSR-102	RD	15.0	.5906	32.0	1.2598	9.0	.3543	20.42	28.49	.30	.012	9	3/16	1250	630
☆ SSR-202	RD	15.0	.5906	35.0	1.3780	11.0	.4331	20.70	31.60	.61	.024	7	1/4	1700	790
SSR-1903	RD	17.0	.6693	30.0	1.1811	7.0	.2756	21.13	25.78	.30	.012	11	5/32	1000	550
☆ SSR-103	RD/KC/KE	17.0	.6693	35.0	1.3780	10.0	.3937	22.73	31.34	.30	.012	10	3/16	1300	710
SSR-203	RD	17.0	.6693	40.0	1.5748	12.0	.4724	24.18	32.82	.61	.024	8	17/64	2100	1050
SSR-1904	RD	20.0	.7874	37.0	1.4567	9.0	.3543	25.27	32.05	.30	.012	9	7/32	1600	860
SSR-104	RD	20.0	.7874	42.0	1.6535	12.0	.4724	27.31	35.43	.61	.024	8	1/4	1900	990
SSR-204	RD	20.0	.7874	47.0	1.8504	14.0	.5512	28.73	38.28	1.02	.040	8	5/16	2850	1450
☆ SSR-1805	KC	25.0	.9843	37.0	1.4567	7.0	.2756	29.10	32.85	.30	.012	17	1/8	820	600
SSR-1905	RD	25.0	.9843	42.0	1.6535	9.0	.3543	30.35	37.08	.30	.012	11	7/32	1850	1100
SSR-105	RD	25.0	.9843	47.0	1.8504	12.0	.4724	32.18	39.80	.61	.024	10	1/4	2200	1300

☆ Production standard.

Notes:

- Metric to inch conversion—see page 68.
- Basic part numbers shown above include code "SS" for AISI 440C stainless steel. If SAE 52100 chrome alloy steel is desired, delete "SS."
- Tolerances per ABMA standard #20.
- r=Maximum shaft or housing fillet radius that bearing corners will clear.

- While we have the capability to produce the sizes listed, they are not all currently in production. Please consult with factory for minimum order quantity and quote.
- Add "Z" for single shield, "ZZ" for two shields, as a suffix to basic part number.

- * Please consult with factory for machined cage options.
- \diamond Inch conversions are given for reference only.
- ** Load ratings are based on ABMA Standard #9.