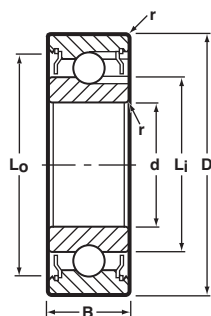


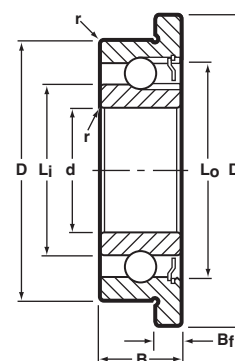
Full Ball Complement, Radial, Shielded, Unflanged and Flanged



Unflanged
Shielded



Flanged
Shielded



BASIC P/N †	BORE d		O.D. D		WIDTH B		FLANGE DIA. D _f	FLANGE WIDTH B _f	LAND DIAMETER (REFERENCE)		FILLET RADIUS r	BALL COMPLEMENT		LOAD RATINGS** LB.	
	INCH	(mm) ◊	INCH	(mm) ◊	INCH	(mm) ◊			L _i	L _o		NO. Z	SIZE D _b	DYN. C	STATIC C ₀
SSRI-2 1/2ZZF	.0469	1.191	.1562	3.967	.0937	2.380	.203	.031	.081	.134	.003	10	1/32	22	9
SSRI-3ZZF	.0550	1.397	.1875	4.763	.1094	2.779	.234	.031	.093	.167	.003	8	3/64	38	15
SSRI-4ZZF	.0781	1.984	.2500	6.350	.1406	3.571	.296	.031	.122	.205	.003	10	3/64	49	20
SSRI-3332ZZF	.0937	2.380	.1875	4.763	.0937	2.380	.234	.031	.118	.167	.003	13	1/32	33	14
SSRI-5ZZF	.0937	2.380	.3125	7.938	.1406	3.571	.359	.031	.182	.282	.003	11	1/16	102	47
SSRI-418ZZF	.1250	3.175	.2500	6.350	.1094	2.779	.296	.031	.161	.228	.003	15	.0394	50	23
SSRI-518ZZF	.1250	3.175	.3125	7.938	.1406	3.571	.359	.031	.182	.282	.003	11	1/16	102	47
SSRI-618ZZF	.1250	3.175	.3750	9.525	.1406	3.571	.422	.031	.182	.282	.005	11	1/16	102	47
SSR-2ZZF	.1250	3.175	.3750	9.525	.1562	3.967	.440	.030	.200	.321	.012	12	1/16	95	45
SSRI-5532ZZF	.1562	3.967	.3125	7.938	.1250	3.175	.359	.036	.221	.287	.003	16	3/64	72	34
SSRI-5632ZZF	.1875	4.763	.3125	7.938	.1250	3.175	.359	.036	.221	.287	.003	16	3/64	72	34
SSRI-6632ZZF	.1875	4.763	.3750	9.525	.1250	3.175	.422	.031	.235	.341	.003	13	1/16	105	50
SSRI-3ZZF	.1875	4.763	.5000	12.700	.1960	4.978	.565	.042	.276	.435	.012	11	3/32	190	93
SSRI-614ZZF	.2500	6.350	.3750	9.525	.1250	3.175	.422	.036	.285	.348	.003	24	.0394	65	39
SSRI-814ZZF	.2500	6.350	.5000	12.700	.1875	4.763	.547	.045	.330	.455	.005	18	1/16	126	71
SSR-4ZZF	.2500	6.350	.6250	15.875	.1960	4.978	.690	.042	.364	.544	.012	14	3/32	231	123
SSRI-1214ZZF	.2500	6.350	.7500	19.050	.2812	7.142	—	—	.341	.639	.016	10	9/64	576	322
SSRI-8516ZZF	.3125	7.938	.5000	12.700	.1562	3.967	.547	.031	.362	.460	.005	20	1/16	139	78
SSRI-1438ZZF	.3750	9.525	.8750	22.225	.2812	7.142	.969	.062	.474	.783	.016	12	5/32	778	470
SSRI-1412ZZF	.5000	12.700	.8750	22.225	.2812	7.142	—	—	.622	.783	.016	22	3/32	297	201

Notes:

- Inch to metric conversion—see page 68.
 - Basic part numbers shown above include code "SS" for AISI 440C stainless steel. If SAE 52100 chrome alloy steel is desired, delete "SS."
 - See page 63 for ABEC tolerances.
 - r=Maximum shaft or housing fillet radius that bearing corners will clear.
 - For single shield eliminate one "Z" from the basic part number.
- † For flanged bearings substitute prefix "SSRIF-" or "SSRF-."
 ◊ Metric dimensions are for reference only.
 ** Load ratings are based on ABMA Standard #12.