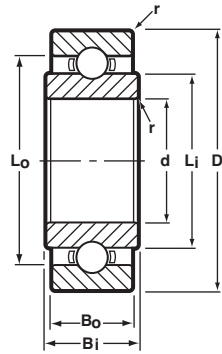


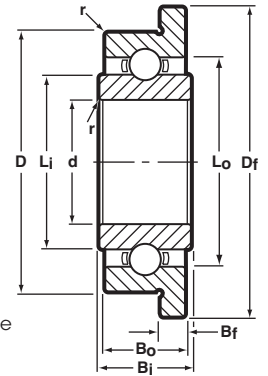
Extended Inner Ring, Radial, Open, Unflanged and Flanged



Unflanged Ribbon Cage



Flanged Ribbon Cage



BASIC P/N †	CAGE TYPE *	BORE d		O.D. D		INNER WIDTH Bi		OUTER WIDTH Bo		FLANGE DIA. Df	FLANGE WIDTH Bf	LAND DIAMETER (REFERENCE)		FILLET RADIUS r	BALL COMPLEMENT		LOAD RATINGS** LB.	
		INCH	(mm) ◊	INCH	(mm) ◊	INCH	(mm) ◊	INCH	(mm) ◊			Li	Lo		NO. Z	SIZE Db	DYN. C	STATIC Co
SSRI-2EE	H	.0400	1.016	.1250	3.175	.0781	1.984	.0469	1.191	.171	.013	.059	.101	.003	5	.025	9	3
SSRI-2 1/2EE	H	.0469	1.191	.1562	3.967	.0937	2.380	.0625	1.588	.203	.013	.081	.124	.003	6	1/32	16	5
SSRI-3EE	H	.0550	1.397	.1875	4.763	.1094	2.779	.0781	1.984	.234	.023	.093	.159	.003	5	3/64	28	10
SSRI-4EE	H	.0781	1.984	.2500	6.350	.1250	3.175	.0937	2.380	.296	.023	.122	.193	.003	6	3/64	35	12
SSRI-3332EE	H	.0937	2.380	.1875	4.763	.0937	2.380	.0625	1.588	.234	.018	.118	.161	.003	7	1/32	19	6
SSRI-3332EE	R	.0937	2.380	.1875	4.763	.0937	2.380	.0625	1.588	.234	.018	.118	.161	.003	8	1/32	21	8
SSRI-5EE	R/H	.0937	2.380	.3125	7.938	.1406	3.571	.1094	2.779	.359	.023	.173	.270	.003	6	1/16	60	22
SSRI-418EE	H	.1250	3.175	.2500	6.350	.1250	3.175	.0937	2.380	.296	.023	.161	.230	.003	7	.0394	30	11
SSRI-418EE	R	.1250	3.175	.2500	6.350	.1250	3.175	.0937	2.380	.296	.023	.161	.230	.003	8	.0394	33	12
SSRI-518EE	R/H	.1250	3.175	.3125	7.938	.1406	3.571	.1094	2.779	.359	.023	.173	.287	.003	6	1/16	60	22
SSRI-618EE	R/H	.1250	3.175	.3750	9.525	.1406	3.571	.1094	2.779	.422	.023	.173	.287	.005	6	1/16	60	22
SSR-2EE	R/H	.1250	3.175	.3750	9.525	.1875	4.763	.1562	3.967	.440	.030	.200	.323	.012	7	1/16	66	26
SSRI-5532EE	H	.1562	3.967	.3125	7.938	.1406	3.571	.1094	2.779	.359	.023	.221	.279	.003	7	3/64	41	15
SSRI-5532EE	R	.1562	3.967	.3125	7.938	.1406	3.571	.1094	2.779	.359	.023	.221	.279	.003	8	3/64	45	17
SSRI-5632EE	H	.1875	4.763	.3125	7.938	.1406	3.571	.1094	2.779	.359	.023	.221	.279	.003	7	3/64	41	15
SSRI-5632EE	R	.1875	4.763	.3125	7.938	.1406	3.571	.1094	2.779	.359	.023	.221	.279	.003	8	3/64	45	17
SSRI-6632EE	R/H	.1875	4.763	.3750	9.525	.1562	3.967	.1250	3.175	.422	.023	.235	.343	.003	8	1/16	76	31
SSRI-614EE	H	.2500	6.350	.3750	9.525	.1562	3.967	.1250	3.175	.422	.023	.285	.350	.003	13	.0394	43	21
SSRI-814EE	R/H	.2500	6.350	.5000	12.700	.1562	3.967	.1250	3.175	.547	.023	.330	.431	.005	10	1/16	88	40
SSRI-8516EE	R	.3125	7.938	.5000	12.700	.1875	4.763	.1562	3.967	.547	.031	.362	.460	.005	11	1/16	93	43

Notes:

1. Inch to metric conversion—see page 68.
2. Basic part numbers shown above include code "SS" for AISI 440C stainless steel. If SAE 52100 chrome alloy steel is desired, delete "SS."
3. See page 63 for ABEC tolerances.
4. r=Maximum shaft or housing fillet radius that bearing corners will clear.
5. Open bearings may or may not have shield grooves (detail not shown in the above drawings). Consult the factory for reference information regarding the shield recess diameter.

- † For flanged bearings substitute prefix "SSRIF-" or "SSRF-."
- * "R" Ribbon or "H" Crown cages are available as indicated. Please consult with factory for machined cage availability.
- ◊ Metric dimensions are for reference only.
- ** Load ratings are based on ABMA Standard #12.